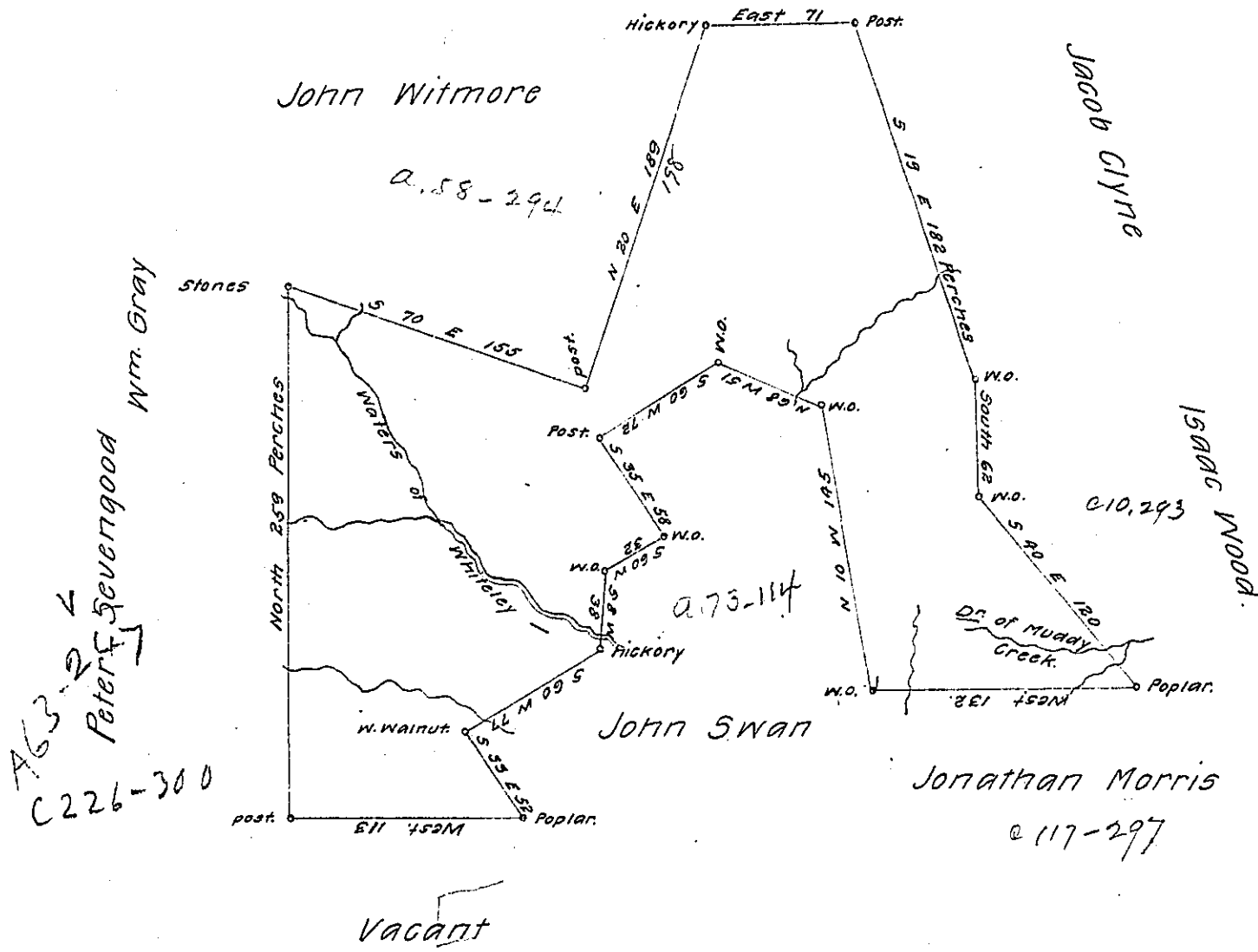


Sam<sup>l</sup> Hickman.



A. obl. ght. of a Survey Situate on the waters of Whiteley & Muddy Creek in Washington County Called Muddy Lick Contain- ing 413 1/2 acres of land & allowance of 6 P.C. Surveyed May 11<sup>th</sup>. 1786 In Pursuance of a warrant granted to Daniel Witmore for 400 acres Dated Ap<sup>l</sup> 19<sup>th</sup>. 1785.

Jn<sup>o</sup>. Hoge. D.S.

To John Lukens Esq<sup>r</sup> S.G.

IN TESTIMONY that the above is a copy of the original remaining on file in the Department of Internal Affairs of Pennsylvania, made conformably to an Act of Assembly approved the 16th day of February 1833, I have hereunto set my hand and caused the Seal of said Department to be affixed at Harrisburg, this twenty-second day of June 1907.

*Henry Howell*  
Secretary of Internal Affairs.